

# Logistical Intelligence:

It is easier for a logical learner to group their information, and not try to learn everything that has been talked about during a lecture. Therefore the best way to study would be to categorise your notes from a lecture or from your reading, finding a common denominator and then identify the key concepts in each of the categories, followed by identifying the cause and effect relationships between each of the categories. This will not only improve understanding of complex academic theories, but can improve the way you structure your essays.

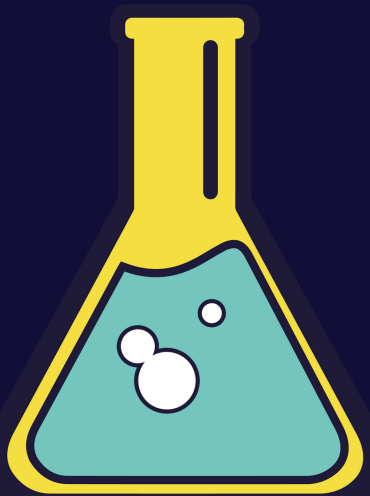
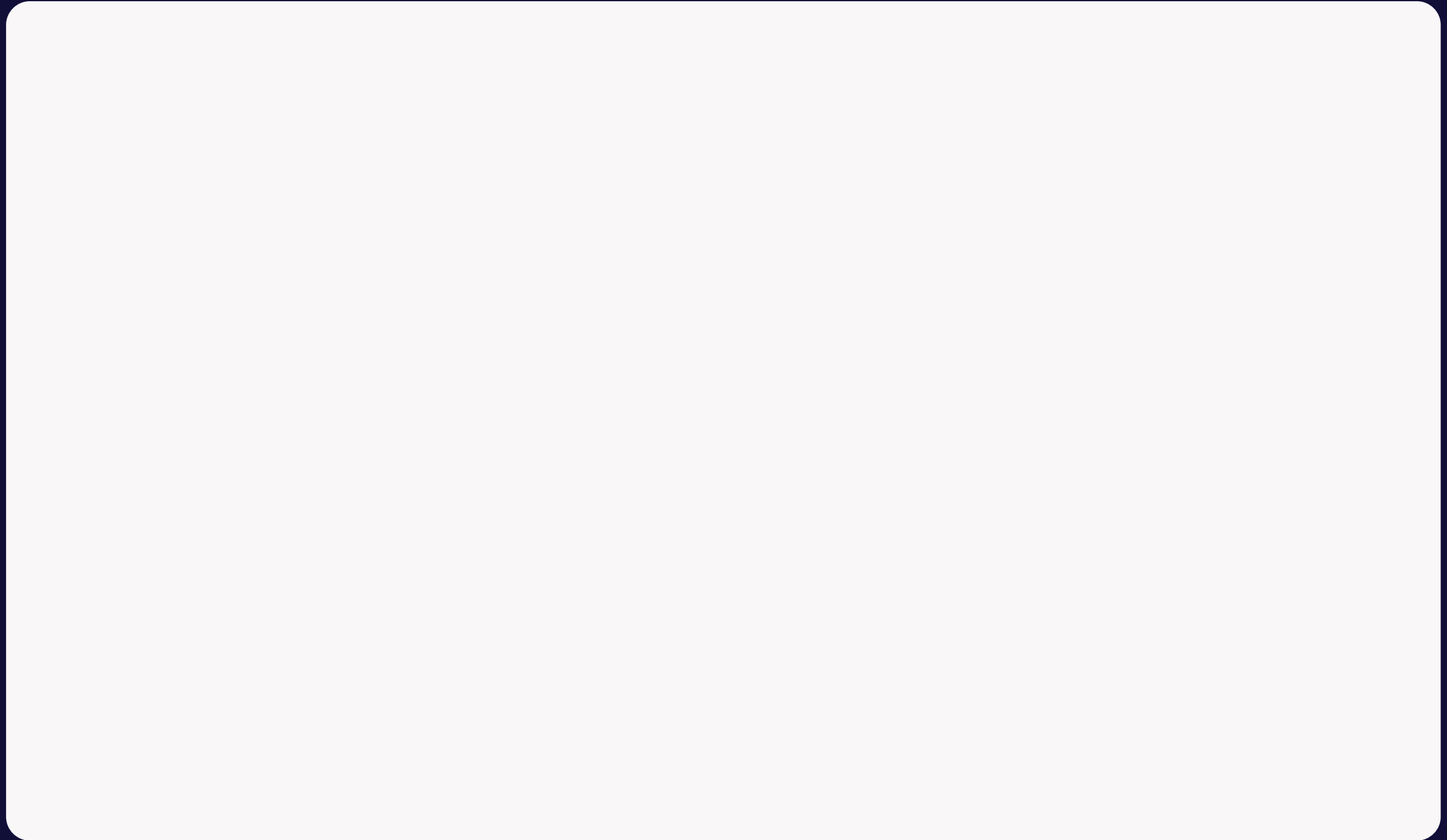
**Categorise your notes with common denominators:**



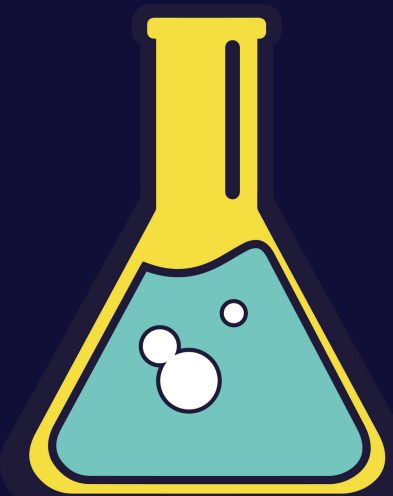
**Identify each category's key concept:**



**Identify cause and effect relationships between categories:**



**PEER  
MENTORING  
SCHEME**



In partnership with  
 UNIVERSITY OF  
LEICESTER