



**LEICESTER
STUDENTS'
UNION**

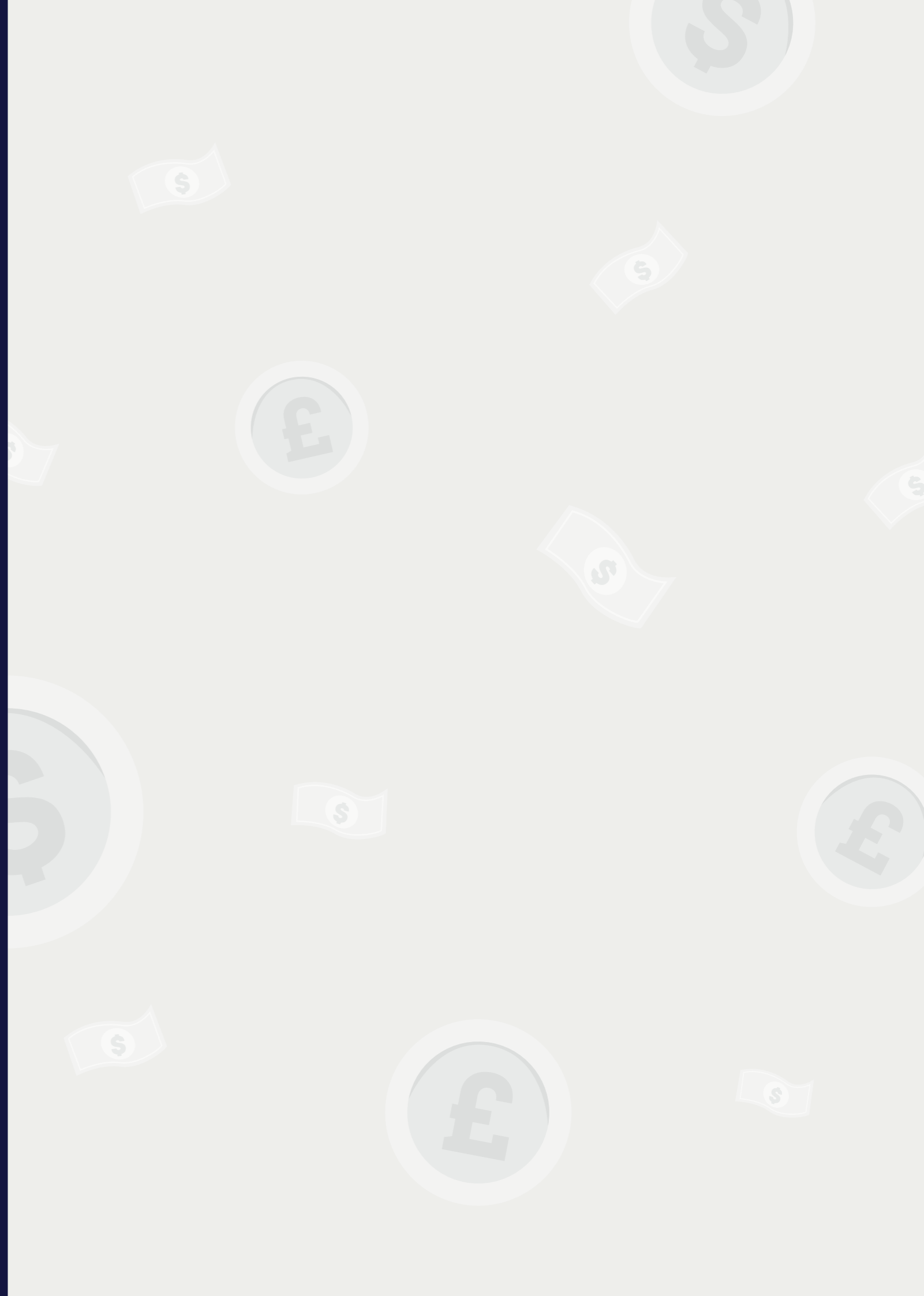
College of Social Sciences, Arts and Humanities

Cost of Living Student Support Guide



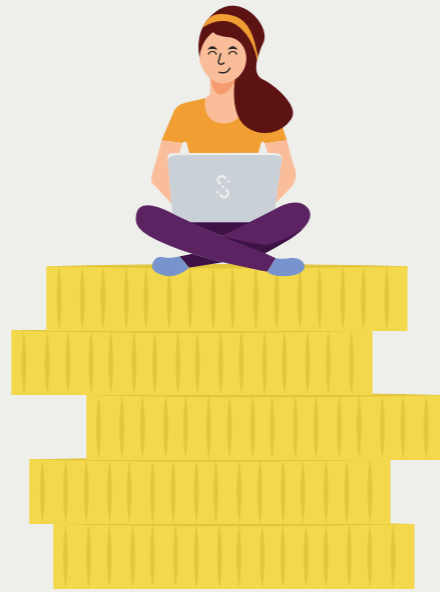
Contents

- 04** What is cost of living, each student is different
- 06** Shared expenses students are facing
 - 06** Travel
 - 08** Study materials
 - 10** Added extras
 - 11** Graduation Costs
- 12** Additional tips to saving and gaining money on your course
- 13** Getting Help



Cost of Living and how it might affect you as a student?

As a student starting university, you will be aware of the basic costs relating to university which is, of course, your tuition fees! However, across most subjects (be it at Undergrad or Postgrad level), students come face to face with costs which on the most part, they did not expect! These include any additional costs like printing or materials, field trips, lab coats, travel passes etc.



After gathering data from students in the College of Art and Humanities, we at the Student's Union, have created this booklet in the hope that it would serve as a useful guide to students! It has all the information on what further expenses may be coming out of your pocket when you join the university. We have also included our top tips on how to save money be it through discount apps or our free shuttle bus!



Each student's experience is different!

Every student's experience is different: personal circumstances, what degree you choose to study, whether you are a commuter or a student living in accommodation and your lifestyle all affects the expenses you pay as a student.

Personal Circumstances

If you are from a low-income household (total household income below £25k), you may be entitled to a £1,000 scholarship offered by the university. Find out more [HERE](#)



Where you live

If you are living with a parent or guardian(s), you will be saving lots of money by not paying rent. If you choose to live away from home, you will have to pay rent and bills which can be expensive.

Your commute

You may need to catch the train to get to university every day, and these tickets add up! You might have to catch the bus from your accommodation to get on to campus too. Commuting to university is another expense when coming to university.



Whether your course requires additional materials

If you are studying Art, Architecture or Law, you may need to buy portfolios, stationary equipment, a calculator, and a laptop. You may need to buy textbooks and suits – all of which adds costs to your degree at uni!

Shared expenses students are facing across all courses

Travel

There are numerous ways to travel within Leicester. Whilst some amenities are within walking distance, others may need a car, bus or train. From our research, we have found that a significant amount of a student's expenses has come from travel costs. Students spend an average of £535 on travel – this includes bus passes, train passes, Uber drives and taxis!

Living in Uni accommodation

We have a FREE regular bus service during term time between The Village and the main campus.

Run by the University and operated by Centrebus, it is the ideal way of getting to and from uni! Using this service is free for residents staying in The Village. For the duration of your accommodation contract, you won't need to purchase a bus pass.

If you live in the city, Campus is within easy walking distance of all The City accommodation. Walking times will vary depending on where you are staying and which bit of campus you are heading to, but nowhere is more than a few minutes away!

If you live within Leicester, at home or in privately rented accommodation

If you live within Leicester, it is best to use public transportation as it is reasonably quick and affordable

BUSS PASS

First	£484 Annually
Arriva	£475 Annually (Zone Dependant)
Centrebus	15% off with NUS Card



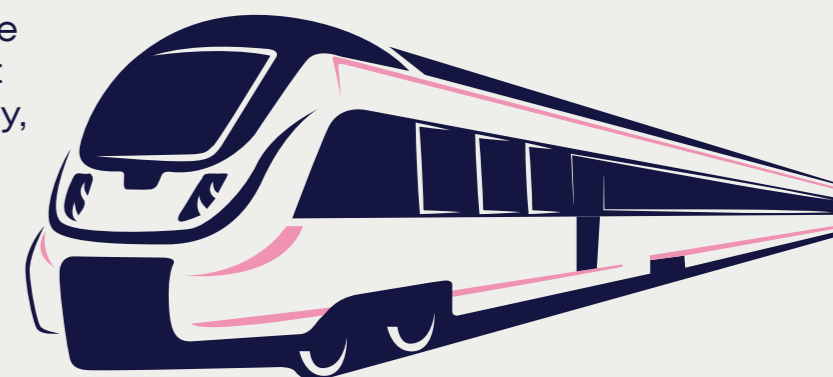
Be sure to tap on and tap off to make sure you get the cheapest fair!

If you are using multiple bus companies, then it might be better to get a Flexi Ticket. This lets you use the ticket on ANY three days in a given calendar week. This ticket is only available on participating operator mobile phone apps.

An alternative way of travelling which is more sustainable and eco-friendlier is to invest in a bike! Whilst the cost may seem heavy at first, it is an investment which can be used for many years ahead! The University has many cycle storage locations available for students at the University.

There is also a Bike Park which University students are eligible to register for. There are a number of places for you buy second hand bikes to cut down the cost, and there are also places where you can hire bikes too! Be sure to buy your bike from a trusted seller. We have attached a link which lists trusted sellers within Leicester [HERE](#)

Depending on how far you live from the University, you may also be able to cut costs on tickets by walking to university, especially towards the summer when the weather is brighter!



Commuter students

If you are travelling into Leicester from a different city, you most probably will be coming by train. This means you will have to buy a railcard. As you are a student on a full-time course, you can apply for the 16-25 railcard which is £30 a year, or £70 for 3 years. Your 16-25 Railcard gets you 1/3 off Standard Anytime and Off-Peak fares, as well as Standard Advance and First-Class Advance fares. You can also apply for a student coachcard via National Express which is £30 for 3 years and gives you 15% off your tickets.

A top tip: if you open a Santander student account as your main bank account, then you can get the railcard for free with no upfront costs, saving you £70, and can be used for 4 years!

Santander student railcard – lasts for 4 years as opposed to the standard student railcard which only lasts a year or 3 and has an upfront cost
Requirement: Open a student account with Santander and use it as your main account. Pay in £500 per academic term. Register for Santander's online Banking service. For more information click [HERE](#)

You may be eligible for a travel grant depending on your course of study. Check if your eligible by looking at the Government website [HERE](#)

Study Material

When sitting in lectures, you might want to write up notes. For this you will need a notebook and some pens. To track your assessment deadlines, you may invest in a diary to keep you tracking days, and you may also buy flashcards to revise important content. All these seem like small expenses; however, they add up in the long run! From our research, most responses included study material as a hidden cost to university.

Depending on your course, you may need to purchase additional materials and books. Law students and MFL students had course material as their second greatest expense - Law students have a significant amount of their expenses drawing from purchasing textbooks of which they have spent a total of £180! Archaeology students have also had to purchase textbooks and monographs, whilst students in the School of Business have had to buy specific calculators for their modules.



Remember you have access to the university library which holds more than 100,000 books and you can reserve them for a period of time. This will save you having to buy your own textbook which could be costly!

If you like to annotate your text and highlight key points, you can also get online access to your readings which means they will always be on hand and in one place!



Do you know someone in the year above that has a textbook they longer need? Try asking if you can borrow their book – a book swap will save you lots of money!

There are many websites which will buy back your books and textbooks. Try looking on websites like Abebooks, Textbookrush and Ziffit to see what you can get in exchange for your books.

If you like physical hand copies of your lecture notes and seminar notes, then you may need to keep some money aside for printing. Remember, each student is automatically credited £15 in their first year of study at the University of Leicester!

Every student's first purchase before starting university is a laptop, but sometimes you may not have the funds to get the best MacBook or iPad. Many stores like Apple, Samsung, Dell and Hp offer student discount which can get you money off your purchases. The University library also has laptops available on loan.

The library has a range of laptops available for you to borrow both on and off campus. The library has both 48 hour and 28-day loan laptops available. These laptops may be reserved through Library Search

The library also has a range of computer rooms which you can use during your time of study! Also, university computer availability is also available to anyone with a UoL App on their phone. The app uses a traffic light system to show computer availability in all their common areas; and displays the exact number of computers left in real-time, so you can pick the quietest available spot.



Scholarships and Bursaries:

You may be entitled to receive scholarships and bursaries dependent on your course and status as a student. If you are on a medical course, you may be entitled to the NHS bursary. Check on the university website for the scholarships that the university offers and check on websites like Turn2Us grant search and see if any is applicable to you!

Added Extras

Some courses have additional costs which you would not have expected when applying for the course. These may be society memberships for life which you have to join in order to network and gain experience. It may also be purchasing a suit for formal presentations and events, where dressing the part is necessary! Alternatively, some courses may offer field trips out of the city or country which are either compulsory or optional – nonetheless you will need money for the trip and to enjoy yourself there too!

Law students reported buying formalwear and suits for their practice mootings, interviews, and internship opportunities

Students also reported having to buy wardrobe items for socialising, as some schools hold Balls and social events at the end of the year or throughout the year



MFL students reported setting money aside for trips out of the country. Students on the Museum Studies course must fund their summer internship which can be a massive cost amounting to a couple of thousand pounds!

Archaeology students have had to buy fieldwork clothes to keep themselves prepared when working outside in the rain, and with soil. This included knee pads, work gloves, raingear, and outdoor clothes.

Whilst on campus, and in between lectures you may want to grab a quick snack. The Student's Union has worked with the University and LSP outlets to ensure that students are not paying more for their lunch deals. You can find lunch meal deals at the Delicious Café for £3.50 which match Tesco and other supermarket offers. We also have many food outlets on campus which are cost friendly for students, and include chips, pizzas and many more!

You are also welcome to bring your own food onto campus. The Community Kitchen in the Common Room has microwaves which you can use to warm up your food. We also have water fountains located around campus, so investing in a refillable water bottle is convenient and eco-friendly!



**LEICESTER SERVICES
PARTNERSHIP**

Graduation Costs

You're nearing the light at the end of the tunnel, and you're coming to the finish line! All your hard work seems worth it when you get to walk across the stage in your graduation gown and cap in front of your family and friends. But! Many don't expect the costs that come with graduating, and sometimes this deters them from attending their graduation, to save on costs. We will give you the low down so that you can prepare in advance as you near to the end of your degree. After all, your hard work is worth celebrating!

Tickets - Each graduate is allocated two free tickets and has the option of requesting two additional tickets for no extra costs

Buying your graduation outfit is quite expensive compared to hiring your outfit for the day. If you'd like to save costs, then hiring your outfit is the best option. You can always choose to retain your robe for an extra week after the event for an additional £25 if you would like to take pictures and wear it to your celebration party.



Cost to buy

Gown	From £125
Hat	From £43
Hood	From £71

Or rent all items for £45 for the day!

The University also has a photographer company on campus, on the day of your graduation. Getting your pictures is an additional expense that you may have to factor into your budget. These start from £24.50 for one print and increase in cost as you order packs and different sizes.

Students who find that the cost of a graduation ceremony is a barrier to attending may apply for support from the Graduation Hardship Fund. Successful applications will receive a contribution of up to £30 to their graduation gown hire and/or up to £50 towards travel costs from the University.

Additional tips to saving and gaining money on your course

Each course has roles open to students where they can earn money, whilst also bringing value – try applying for course rep, school reps and student ambassador roles. These fit within your studies and mean you can earn money whilst also gaining valuable skills throughout university

Some courses offer incentives when they ask you to complete surveys. These can be in the form of vouchers that can be used on campus or vouchers used online. The Students Union also holds many fairs, events, giveaways, and part-time job roles which offers money, vouchers, and free products.



Remember to use moneysaving apps like UniDays, StudentBeans, SavetheStudent to receive offers and discounts on products and materials which you may need to purchase throughout your degree.



Sign up to BlackBullion to help you manage your finance. BlackBullion is an award-winning resource which equips students with money skills for life. As a University of Leicester student, you can now sign up for BlackBullion for free by clicking the link [HERE](#)

 * **blackbullion**

Getting Help

When times are tough, there's nothing wrong with asking for help – whether that means asking your family for support, looking into government assistance, or applying for student hardship funds. Speaking to Student Services at your university is a good place to start, and so is checking out government websites for information on benefits and assistance – and then there's the Blackbullion Funding page [HERE](#)

Student Finance

If you can, take advantage of student finance. Wherever you are in the world, it helps to look at the funding and benefits available for students. Look through government websites to find out what's on offer, or speak to your university, who will be able to point you in the right direction. You could be eligible for a loan to cover your tuition, living costs, and course materials, which can go a long way to sorting out the basic costs of student life.



University Funds

Universities have support funds available if you find yourself struggling while you're studying. your friendly neighbourhood Student Services team can help you out here. If you need a bit of assistance, don't be afraid to reach out and ask for help – that's what they're there for.

SU Advice

The Student's Union Advice team are always on hand to help with any student related issues. Whether it's course-related, queries with accommodation or personal problems - we give you confidential and impartial advice. What's more, it is free!



Independent of the University, we will listen, consider your circumstances and advise you on the best route to take. We will talk you through processes and advise you on how to put together the information you need, as well as reviewing it for you before you submit to the University.