

#SUELECTIONS

WHO'S YOUR PICK?

Manifesto Booklet
Full-time Elections
2016-2017

LEICESTER STUDENTS' union

Activities Officer



My name is Cynthia Chang

- I am standing for the **Activities Officer** position.
- I have an outgoing personality and enjoy socialising
- I am also patient, empathic and listen to the thoughts and feelings of others.



Experiences:

- Previously worked as a Student's Union Representative / President at my high school for 2 years
- Currently serving as the Community Zone Chair for the SU
- Events and fundraising experience, both within the SU and for Leicester City businesses

If elected my 3 priorities will be to:

- Simplify the room booking system for Societies
- Install a Societies events list display screen in the library
- Install an online Societies funds balance display



KEEP
CALM
AND
Vote
Cynthia



VOTE FIONA #1 FOR ACTIVITIES

3RD YEAR PSYCHOLOGY

STUDENT ACTIVITIES ADVISOR

**MENTAL HEALTH AWARENESS & SUPPORT
SOCIETY (MHAS) SECRETARY**

**PERFORMER IN THE LEICESTER VIXENS
BURLESQUE SOCIETY**

MY 6 POINT PLAN

1. REWARD SOCIETIES WITH EXTRA CASH FOR MEETING TARGETS: Currently, societies receive a strike for each document submitted late. I want the SAS system starting in September to focus on rewarding committees for meeting goals, NOT punishing them for not doing things on time.

2. £2 STUDENT RUN NIGHT OUTS AT THE O2: Last year the media societies had to cancel their student-run night "WAVE" due to problems with the SU's partnership with the O2. I want to push for a student run night that would put money back into the SU and societies, instead of Rockstar's back pockets.

3. SUMMER VOLUNTEERING TO COUNT ON YOUR HEAR & LEICESTER AWARD: Many students volunteer over the holidays but this isn't recognised on the HEAR or Leicester Award. Completing the Leicester Award over the holidays would give your degree an edge and save extra stress over term time.

4. LIVING WAGE FOR ALL STUDENT STAFF: From 1st April, workers aged 25+ will be paid £7.20 but most student staff are younger than this. Working students shouldn't miss out, especially when maintenance grants are being cut.

5. DISCOUNTS ON HOT DRINKS WHEN YOU BRING YOUR OWN CUP: Extend the Library's offer for 25p off drinks when bringing your own cups, along with a loyalty card, to cut down on waste from disposable cups.

6. CHOOSE YOUR OWN COMMITTEE TRAINING: Instead of committee members having to do the same training that isn't useful for their role, I want students to be able to choose which training is best for them.

MY OTHER PLANS SOCIETIES & ACTIVITIES

-AFFORDABLE ARTS & LANGUAGES FOR ALL:

The Uni's Arts Centre and Language classes are too pricey for most students. I will negotiate a student friendly cost for both, and extra levels for newly introduced languages

-MORE SOCIETY SUPPORT: Societies can book slots on Wednesday afternoons if they want help but this can be difficult for course reps and sports teams. I would open up Friday afternoon as an extra drop-in session

-SOCIETY GUIDE EBOOK: Produce an online guide book (ready for September) with all the information about starting and running a society in one place, with societies told whenever this is updated.

-ROOMBOOKINGS: Change the system so groups aren't double booked or left waiting for weeks to find out about their room.

-INTERNATIONAL FOCUS: Promote international opportunities so all students can take advantage, make the International Welcome Fair as big as Freshers Fair.



THE ONLY CANDIDATE WITH EXPERIENCE WORKING IN THE ACTIVITIES DEPARTMENT

I know what realistically
can be changed

EXPERIENCE OF OTHER UNIONS

Studied Maths at UEA,
Korean at CAU in Seoul

INTERNATIONAL INTEREST

Studied in South Korea,
worked in Poland - both
opportunities I got
through the Uni

[FACEBOOK.COM/
FIONA4ACTIVITIES](https://www.facebook.com/fiona4activities)

[TWITTER.COM/
VOTEFIONA2016](https://twitter.com/votefiona2016)

SUSTAINABILITY & THE SU

-SWAP TO RECYCLED MATERIALS: Push the SU and Uni to swap to recycled paper and environmentally friendly materials where possible.

-LEICESTER DIVESTS: More support for the campaign to stop the Uni investing our tuition fees in fossil fuels and tobacco companies.

-PUT MAPS INSIDE THE SU: Not knowing where confidential services (Choices and Headspace) are can put students off. its time to put maps in the SU!

-DISCOUNTS FOR ALL STUDENT STAFF ACROSS THE SU: NOT just for certain departments.



I love working in Activities and getting to help other students with their societies - I want to be your Activities Officer so I can make the changes that students tell me would make their societies more fun and easier to run!

FUNDRAISER

Raised £2000+ with MHAS for men's suicide charity CALM

Fundraising Ambassador for the Centre for Medicine

VOLUNTEER

Assistant at Barnsley Drugs Project supporting people with addiction

Community Befriender at Together for people with severe mental illness



BRADY LLOYD FOR ACTIVITIES

My goals

If I were elected for Activities officer I would:

- Help develop the new Student Group Accreditation System to be as useful to societies as possible
- More flexible funding application system
- Greater minibus availability
- Encourage societies to host more volunteering & fundraising events & reward societies who host such events
- Get access to the HEAR before graduation



Brady Lloyd, 22
4th year Physicist

Why me?

As the current captain of the Hiking Society I understand some of the difficulties society committees can face when organising events.

[facebook.com/BradyforActivities](https://www.facebook.com/BradyforActivities)

BRADY LLOYD FOR ACTIVITIES

Student Group Accreditation System

This is a new system coming into place next academic year which rewards societies for achieving certain goals and rewards them with perks. I would look to modify the system such that societies could pick their rewards and different tiers of achievement would allow for different numbers of rewards.

Flexible Funding Applications

Societies currently have to apply for funding the month before an event. This can make planning for a large events occurring at the start of a month more difficult. I would propose to allow funding applications further in advance to allow societies more time to plan ambitious events.

Greater Minibus Availability

There have been issues of availability of 15-seaters for society use due to losing the SU minibus. I would like to end this problem so societies don't have to run events with reduced capacity - be it through another minibus or seeking a preferential deal with a hire company.

Volunteering & Fundraising

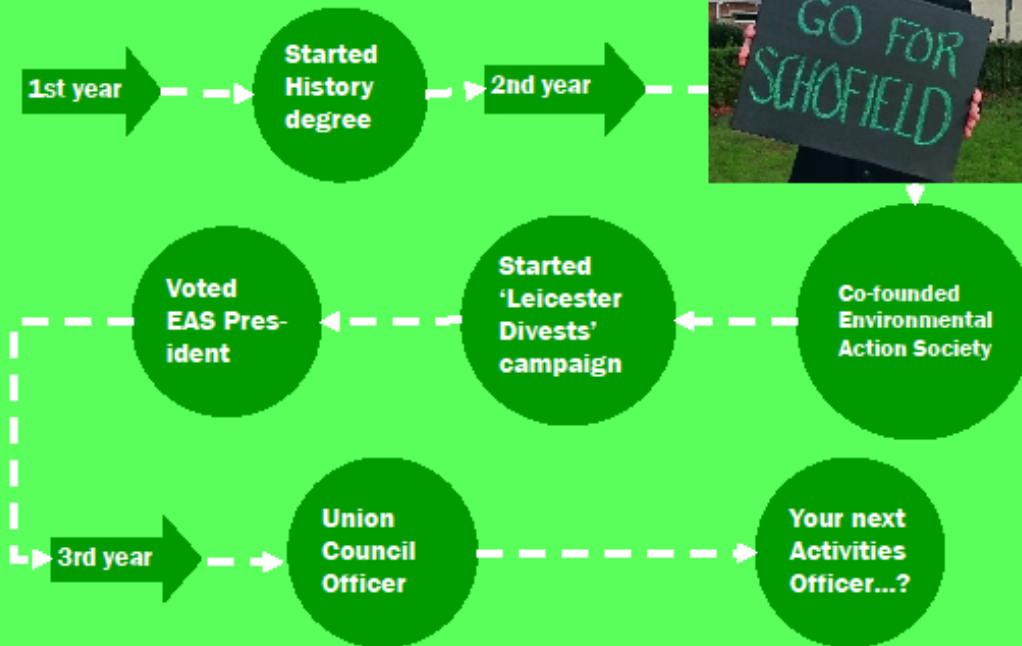
I would like to increase the number of students participating in volunteering & fundraising events. The most natural way of doing this is through societies. I would propose including a volunteering/fundraising event as a part of the new SAS reward scheme.

HEAR Access

It is currently impossible to access your HEAR before you graduate. It would be useful to be able to view it in a similar fashion to end of year transcripts so students could more easily keep track of their extra-curricular development.

GO FOR SCHOFIELD

Dan's UoL journey...



VOTE DAN FOR ACTIVITIES

Voting period = Mon 22nd Feb until Fri 22nd of Feb

Vote online at leicesterunion.com/vote

FB - <http://www.facebook.com/goforschofield>

GO FOR SCHOFIELD MANIFESTO

Sports Accessibility

I will offer a sports insurance card so you can save money and participate in sport without purchasing a gym membership.



SU transparency

I will create a 'projects in progress' page on the SU website so you can see what your officers are working on and leave ongoing feedback.



International student engagement

I will create alternative SU pages on other social media platforms, such as weibo, so that those international students that don't use facebook don't miss out.



Publicity

I will create an SU page on the UoL website with updates featuring our societies' achievements and news from Union Council so visitors can see this important aspect of university life.



Environmental

I will hold an environmental audit of our SU and create a long term plan to reduce our carbon emissions with the ambitious aim of becoming a carbon zero SU.



Committee training

I will offer more support to societies and foster inter-society relations with optional workshops for planning events and running your societies in addition to the online training.



E-forms

I will reduce society administration and continue streamlining our online form submission to save you time, reduce admin costs and help the SU's 'paperless' campaign.



LEICESTER STUDENTS' union

Do you think none of the candidates
are good enough to be an Activities
Officer?

Then vote for **Re-Open Nominations
(R.O.N.)**

If R.O.N. is elected then the election
will have to be re-run allowing other
students to bring forward their ideas

LEICESTER STUDENTS' union

Education Officer



Hello!

Throughout my time here I have witness positive and negative changes. Were some changes are highly needed in order to produce equal opportunities and an environment suitable for all type of students. **With YOUR Vote this can happen!** With my pass achievements and experience, it has made me more passionate about educational changes. With **YOUR Vote**, I can be the Education Officer that **YOU** will **NOT** regret voting for! :D

5 Main point to improve YOUR student life!

HEAR Award- Is currently only available to undergraduates, I want to make it available for Distance Learners and Postgraduates students as well.

More Support- For Study Abroad Students, so they feel more connected to their home university. Academic support for students during and after academic appeals.

Second hand book fair- Students can sell their book used book to other students, to save money, time, and prevent books from collecting dust. A recycle system.

More Employability- More student enterprise that targets specific field of study, and other opportunities within the Student Lifecycle Programme.

Library- Bean bag section, a change of environment to make studying and reading more effective.

Other important changes!

More Diversity- More food option and cultural events.

Welcoming- Better welcome service for all students arriving to Leicester and optional cooking lessons.

Course Rep- More opportunities and a better system to log reports and Credits.

Peer Mentoring- Give Postgraduate, Distance Learners, and Study Abroad students the opportunity as well.

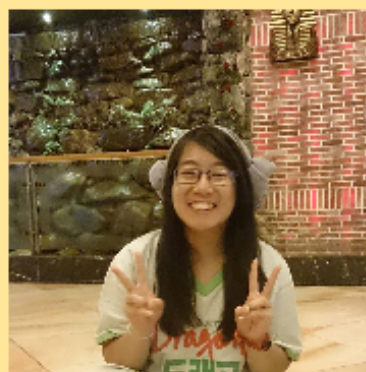
Building a relationship- A better relationship with other universities to open more opportunities.

Lecture Capture- Making its more accessible for all students.

Exam- More study space during exam period.

Timetable- A new system that alert students when their timetable is up and when class has been cancel or change of room.

Personal Tutor- Improve personal tutor system, such as the consistency.



Facebook Link: [https://](https://www.facebook.com/sedtinwforweducation)

www.facebook.com/sedtinwforweducation

Vote: <http://www.leicesterunion.com/vote>

**Voting begins: Mon 22nd Feb–
Fri 26 Feb 2016**

ROB GREENHILL
#1 FOR EDUCATION OFFICER!



Who? Rob Greenhill, product of Lifelong Learning's BA Humanities and Arts, and currently Mature and Part-Time Students' Officer.

Three-time Captain, now coach, of Leicester's University Challenge Team (We will be back!), Brain of Britain semi-finalist (All to play for!), the one who bumps into the furniture at LUTheatre...

What? To represent all of you in the key part of your university experience: the top-notch education you came here for.

£9000 a year is a lot of money, and I aim to see you get value for money, in part by making things work as advertised.

- Assisting the transition to flexible pathways and dealing with teething troubles.
- Raising awareness of the HEAR report and Leicester Award at the earliest possible stage and making both accessible to those currently excluded.

- Maintaining and developing the Course Rep system. The Education Officer's job would be impossible without it!
- Distance learners, mature and part-time students in particular need a passionate and vocal advocate, both to promote their education at Leicester and defend it nationally. A significant proportion of Leicester students are not full-time, campus-based, 18-24 year olds, yet all the Sabbatical Officers have come from the 'traditional student' demographic since at least 2010. Electing a mature Sabb from a part-time background would send a powerful message about Leicester's commitment to diversity.
- I still hear people around campus saying the Union is out of touch. That needs to change. An early priority will be to find out what you expect of us. Sitting in on your lectures? Trying out your sports and activities? **Tell us! We work for you!**

Why Vote For Me? Experience!

Experience of representation, of consultation, of team-working, of building consensus, listening and smoothing ruffled feathers. I'm also not afraid to look silly in pursuit of the greater good – as you'll know if you've seen my screen!

- **5 years as Course Rep**
- **3 years Union Council (Education Zone)**

- 4th year Student Experience Enhancement Group
- Course Rep of the Year 2013
- NUS Course Rep Conference 2014
- NUS Sections Conference (Mature & Part-Time) 2015
- Leicester Award (Students' Union Leadership and Management) 2014
- Leicester Award Gold (Catalysts for Change) 2015
- Participant in 'Are Students at the Heart of Our Processes?' university-wide collaborative project



Mon 22 Feb until 2pm Fri 26 Feb 2016

www.leicesterunion.com/vote

ALEX MITCHELL FOR EDUCATION

Hi, my name is Alex Mitchell and I would like you to put me as you number one choice for your next Education Officer.

For those of you who don't know, I have been for the past year your Engagement Officer and I have done some great things while being in office including:

- £2 Pints in the SU
- Increased voter turnout by 1/3
- Organised a free cycling campaign
- U turned the governments decision on Postgraduate loans
- More film days and nights



Good right? But why should you put your faith in me further and for another year as your education officer?



I am a passionate and hard working individual who loves the Students' Union and everything that it represents. From student groups, campaigning to academic representation.

I am a fantastic listener who will put 100% of your ideas into practice through a part of my manifesto which you will be able see below.

I have campaigned on behalf of students from many different backgrounds, such as for more free speech on campus, supporting the disabled student allowance campaign plus many more.

But time to look at what I've for planned for this year!



MITCHELL'S MANIFESTO

CHEAPER BUSES - A promise from me to renegotiate with Arriva and to freeze bus prices for 2 years.



OUR OADBY UNION - A space for students and groups to socialise, access services, and put on events right at the heart of the Fresher's atmosphere.

RECORDED LECTURES - To allow students a channel to let the SU know if their lecturer has opted out of recordings being brought in.



STUDENT GRANTS - Campaign to bring back student grants for the poorest students, in collaboration with the NUS.



PERSONAL TUTOR TRAINING - Develop a student led programme.

EXAM BREAKFASTS - A buffet style deal during both exam seasons.

GO PAPERLESS - I'll continue the push to persuade more departments to allow paperless submissions for their students.



FREE SU PRINTING - If the one above doesn't work, I will use the SU budget to help with your printing costs.

THE COURSE REP EXPERIENCE - I'll provide more opportunities for course reps to being of programme approval panels and disciplinary hearings to be more accountable to students and to gain experiences.



BAME ATTAINMENT GAP - I will campaign on this issue and persuade more higher management in the University to take this and widening participation more seriously.

MITIGATING CIRCUMSTANCES - Make the University create a system that allows students to submit these before exams and deadlines for submissions.



I hope you agree that all of these policies are incredibly important to students today, be sure to vote from the 22nd - 26th of Feb and place Alex Mitchell as your #1 choice for Education

YOUR IDEAS HERE



Being part of the SU this year has taught me that elections aren't just about candidates with great ideas, but also you. That's why I've dedicated this entire page of my manifesto to you, so that your ideas can be made into policy if I am elected as Education Officer.

Tweet your policies to me @Alex4Education and the top 5 will be turned into automatic commitments I will fulfil for the next academic year!

Be sure to vote 22nd - 26th of Feb at www.leicesterunion.com/vote

WHY LEWIS FOR EDUCATION?

During my time at Leicester I've been heavily involved in improving the educational experiences of students, making me uniquely qualified to become your next Education Officer. For example:

- I've studied at both the undergraduate and postgraduate levels at the University of Leicester.
- I've worked in two Union departments: the Union Point and in the Education Unit as an Academic Advisor.
- I've successfully campaigned for the Education Unit to hold weekly sessions for postgraduates to talk with Academic Advisors at Brookfield.
- I co-chair the Personal Tutor Working Group, ensuring personal tutors provide appropriate pastoral and academic support to students.
- I sit on the Union's Staff Consultative Forum, representing and protecting the interests of Student Staff.
- I've met with the Quality Assurance Agency, an independent body monitoring university standards, reporting to them the concerns Leicester students have about their education.



Rational Policies
Relevant Experience
Real Change

As Your Education Officer I will:

Reform Mitigating Circumstances

Multiple aspects of the University's mitigating circumstances procedure negatively impact upon students' education by preventing them from gaining the support they need. However, by utilising my experience as an Academic Advisor and working with an upcoming university review to achieve fairer procedures, I pledge:

- **to make it easier to claim mitigating circumstances for victims of sexual crimes** - for a crime to be considered a mitigating circumstance requires a crime reference number, but only 10% of sexual crimes are reported to the police meaning current procedures neglect victims of sexual crime. Consequently, I suggest that alternative forms of evidence, such as proof of contacting a counselling or listening service, have equal weighting to a crime reference number in such instances.
- **to achieve equal rights for grandparents in mitigating circumstances procedures** - although they play an increasingly active part in modern families, grandparents are not considered immediate family by the University. This means their death requires additional evidence to be considered a mitigating circumstance. I believe the benefit of the doubt should be given to students, meaning grandparents should be treated equally to parents, siblings and children.
- **to set a minimum standard of etiquette** - students are gambling with their academic success as departments often fail to inform them that their mitigating circumstances have been accepted before their deadline. I understand it may not always be possible to inform a student before their deadline, but I suggest a minimum standard of etiquette in which every department is obliged to keep students informed.

Continue Campaigning for Lecture Capture and Online Submissions

Campaigns for lecture capture and online submissions have been present at Leicester for years. Not only are such policies environmentally friendly, they enable distance learning students to have a better educational experience. Therefore, I pledge:

- **to oversee the implementation of lecture capture and online submissions as the norm across the university.**

Aid Union and University Support Services

Both the University and Students' Union work hard to support the education of student, but I've seen firsthand the difficulties faced when engaging with students. As such, I pledge:

- **to campaign for signposting training, enabling student leaders to promote support services** - to become an Academic Advisor I undertook a week's training with the Union, becoming better aware of the support services available, as well as various university procedures. By empowering student leaders and student-run support services with an introductory signposting session, I believe it possible for the the support services to engage with a greater number of students without any change in their advertising budgets

Host Regular Drop-In Sessions

Transparency, accountability and integrity are essential attributes of all of the Executive officers. I pledge:

- **to host regular drop-in sessions with students** - to promote engagement with, and be held directly accountable to, students I believe it is important to have a visible presence. Thus I will hold regular sessions in which students can talk to me in confidence about their concerns.

Better Support Students Learning English

Excellent written and verbal communication is essential to achieving any degree. Yet, I've spoken to numerous international students who feel the university could do more to support their learning of the English language. Resultantly, I pledge:

- **to help engage students learning English** - The Learning Development Service and English Language Teaching Unit offer excellent courses to students learning English, but given the feedback I've received there's an issue with engaging with international students. In addition to signposting training for student leaders and student-support services. I will work closely with the relevant parties to ensure that the education of international students is not constrained by a lack of engagement undermining their opportunity to improve their English language skills.

Pursue Funding For Research Students in Every Department

I understand that the University has limited resources but, as a postgraduate student, I'm surprised to see that several departments are unable to offer any form of funding for students wishing to study for a research masters or doctorate. I believe that institutions of higher education should enable their departments to sponsor students based upon their merit. As such, I pledge:

- **to work with academic departments to petition the university for an explanation as to why some departments are unable to offer any funding** - I want to be realistic, Rome was not built in a day and nor will a campaign for research funding in every department be. Yet, by holding the University accountable for the current state of postgraduate research funding, I hope a positive first step can be taken to guarantee that every department is able to offer funding to prospective research students who will contribute to the university's prestige.

Encourage Inter-Departmental Communication

My undergraduate was a joint honours degree, so I understand how frustrating it can be when your two departments fail to communicate efficiently, resulting in unnecessary stress and confusion. This is an issue I can only envisage getting worse with the implementation of flexible pathways in the next academic year. Hence I pledge:

- **to encourage inter-departmental timetable reviews** - students achieve better results when studying modules that interest them. However, it is a regular occurrence that students cannot study topics of interest because a lack of communication means that timetabling issues restrict the module choices of joint honours students. I suggest the Union take a more proactive stance in ensuring departments better communicate to mitigate this issue.

Rational Policies, Relevant Experience, Real Change

Voting is open Monday 22nd, 8am - Friday 26th, 2pm

*facebook.com/votelewis4education
www.leicesterunion.com/vote*

LEICESTER STUDENTS' union

Do you think none of the candidates are good enough to be an Education Officer?

Then vote for **Re-Open Nominations (R.O.N.)**

If R.O.N. is elected then the election will have to be re-run allowing other students to bring forward their ideas

LEICESTER STUDENTS' union

President



RE-ELECT RACHEL FOR PRESIDENT



I'VE BEEN REPRESENTING YOU AS SU PRESIDENT SINCE JULY, AND I'VE ENJOYED IT SO MUCH THAT I WANT TO DO IT FOR ANOTHER YEAR.

WHILE I'VE ALREADY ACHIEVED SOME REALLY IMPORTANT THINGS, LIKE INCREASING STUDY SPACE DURING EXAMS, INTRODUCING A PARTICIPATION GRANT TO ENSURE COST ISN'T A BARRIER TO GETTING INVOLVED, AND CONVINCING THE UNIVERSITY TO INTRODUCE A HALLS-EAT-ANYWHERE CARD FOR CATERED STUDENTS, THERE'S STILL MORE I WANT TO ACHIEVE. FROM MORE MEAL DEALS, TO AN ANNUAL HOUSING FAIR AND A BETTER ROOM-BOOKING SYSTEM, RE-ELECT RACHEL FOR AN SU THAT LISTENS TO AND WORKS FOR EVERY STUDENT.

AS PRESIDENT, I'VE ALREADY:

- ✓ WON A 'HALLS EAT-ANYWHERE' CARD, SO CATERED STUDENTS CAN EAT ANYWHERE ON CAMPUS
- ✓ CREATED THE FIRST EVER SU PARTICIPATION GRANTS TO MAKE SURE COST IS NEVER A BARRIER TO GETTING INVOLVED WITH STUDENT GROUPS
- ✓ SUCCESSFULLY LOBBIED THE UNIVERSITY FOR MORE STUDY SPACE AND EXTENDED SU OPENING TIMES DURING EXAMS TO HELP YOU WHEN YOU MOST NEED IT
- ✓ INTRODUCED A TRAIN TICKET MACHINE IN THE SU SO YOU DON'T HAVE TO RUSH TO THE STATION TO COLLECT YOUR TICKETS
- ✓ WORKED WITH THE COMMUNICATIONS DEPARTMENT TO REDESIGN THE UNI WEBSITE AND STREAMLINE STUDENT COMMS
- ✓ LAUNCHED HEFORSHE ALONGSIDE THE UNIVERSITY TO PROMOTE GENDER EQUALITY IN EDUCATION
- ✓ LOBBIED FOR A UNIVERSITY WIDE SEXUAL HARASSMENT SURVEY TO DISCOVER THE EXTENT OF THE PROBLEM AND HOW WE CAN STOP IT
- ✓ GOT THE UNIVERSITY TO AGREE TO AN ALUMNI MENTORING SCHEME TO HELP YOU LAND A GREAT JOB OR INTERNSHIP
- ✓ OPPOSED THE PREVENT GUIDANCE TO ENSURE STUDENTS ARE NOT UNFAIRLY TARGETED DUE TO THEIR RELIGION OR ETHNICITY
- ✓ PUSHED FOR THE SU TO RECOGNISE IMPORTANT EVENTS FROM DIWALI TO HOLOCAUST MEMORIAL DAY
- ✓ LED THE FIGHT TO PROTECT MAINTENANCE GRANTS BY LOBBYING LOCAL MPS AND CAMPAIGNING NATIONALLY WITH NUS
- ✓ SUPPORTED INTERNATIONAL STUDENTS; FROM MEETING THEM AT HEATHROW TO PUSHING FOR A RENT GUARANTOR SCHEME TO ENSURE STUDENTS AREN'T PRICED OUT OF PRIVATE HOUSING
- ✓ REPRESENTED STUDENTS TO THE LOCAL COMMUNITY TO ENSURE WE'RE NEVER FORGOTTEN ABOUT
- ✓ LOBBIED FOR A BETTER STUDENT INDUCTION TO UNIVERSITY TO MAKE THE START OF YOUR DEGREE AS SEAMLESS AS POSSIBLE
- ✓ INTRODUCED AN ONLINE HARASSMENT REPORTING SYSTEM TO HELP END SEXUAL HARASSMENT ON CAMPUS
- ✓ LAUNCHED THE BIGGEST EVER SU STUDENT EXPERIENCE SURVEY TO FIND OUT YOUR PRIORITIES AND MADE SURE THEY'RE THE UNION'S PRIORITIES AS WELL
- ✓ INTRODUCED GLUTEN FREE FOOD IN THE UNION

TWEET: @RHOLL92 | EMAIL: RH291@LE.AC.UK |
FACEBOOK: /RACH4PRES | #REELECTRACHEL

LEICESTERUNION.COM/VOTE
22ND FEBRUARY - 26TH FEBRUARY

A UNION THAT GIVES YOU VALUE FOR MONEY

- MORE MEAL DEALS AND A BETTER VARIETY; BUYING LUNCH SHOULDN'T BREAK THE BANK
- A UNION LOYALTY CARD - SAVING YOU MONEY ON THE THINGS YOU BUY EVERY DAY
- VENDING MACHINES, MICROWAVES AND A FREE HOT WATER TAP IN THE LIBRARY CAFE
- MORE LOCALLY AND ETHICALLY SOURCED PRODUCTS SO WE'RE DOING OUR BIT FOR THE ENVIRONMENT



A UNION THAT LISTENS TO YOU

- A UNION STRATEGY LED BY STUDENTS; YOUR PRIORITIES SHOULD BE THE SU'S PRIORITIES
- AN INTERACTIVE CHANGE IT OR EXPLAIN IT, TO OPEN UP UNION COUNCIL AND MAKE SURE POLICY ISN'T JUST DECIDED BY 60 PEOPLE SAT IN A ROOM
- STUDENT MEDIA: SABB RADIO SHOW AND VLOGS TO UPDATE YOU ON WHAT WE'RE DOING IN AN EASILY-ACCESSIBLE FORMAT

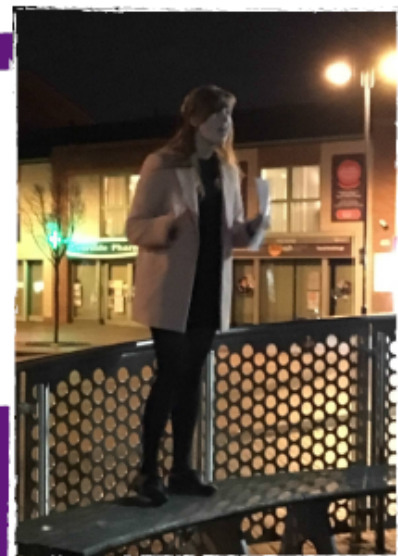


A UNION THAT MAKES YOUR DEGREE BETTER

- STANDARDISED ACADEMIC SUPPORT - STUDENTS IN ALL DEPARTMENTS DESERVE THE SAME LEVEL OF HELP
- CREATE A POSTGRADUATE EMPLOYMENT CHARTER TO ENSURE POSTGRADS WHO TEACH GET A FAIR DEAL
- CAMPAIGN FOR A LIVING WAGE FOR ALL UNIVERSITY STAFF; NO-ONE WHO WORKS ON CAMPUS SHOULD EARN A POVERTY WAGE
- AN ANNUAL VICE-CHANCELLOR'S QUESTION TIME SO YOU CAN HAVE A DIRECT LINK WITH SENIOR UNIVERSITY MANAGEMENT AND QUESTION THEM ON THE ISSUES THAT MATTER TO YOU

A UNION THAT EMPOWERS YOU TO MAKE A DIFFERENCE

- STUDENT CAMPAIGNS POT SO FINANCES AREN'T A BARRIER TO MAKING A DIFFERENCE
- A PRIORITY CAMPAIGN CHOSEN BY STUDENTS NOT SABBS, SO THE UNION CAN CAMPAIGN ON THINGS RELEVANT TO YOU
- AN ACTIVIST ACADEMY SO YOU HAVE THE SKILLS TO MAKE CHANGE ON CAMPUS
- TACKLE FOOD WASTAGE THROUGH A SOCIAL ENTERPRISE PROJECT



#REELECTRACHEL

TWEET: @RHOLL92 | EMAIL: RH291@LE.AC.UK |
FACEBOOK: /RACH4PRES | #REELECTRACHEL

LEICESTERUNION.COM/VOTE
22ND FEBRUARY - 26TH FEBRUARY

A UNION THAT WORKS FOR BETTER STUDENT HOUSING

- A **RATE YOUR LANDLORD SCHEME** SO YOU DON'T GET RIPPED OFF BY UNFAIR FEES AND POOR QUALITY HOUSING
- **WORK WITH THE LOCAL COMMUNITY TO SET UP A STUDENT-COMMUNITY BOARD** WHERE ISSUES SUCH AS HOUSING AND STUDENT SAFETY CAN BE DISCUSSED
- **STUDENT REPS IN HALLS** TO WORK ALONGSIDE RESIDENTIAL ADVISORS TO MAKE SURE HALLS ARE WORKING FOR YOU
- AN **SU HOUSING FAIR** FOR YOU TO CHECK OUT YOUR OPTIONS BEFORE RENTING

A UNION THAT CELEBRATES STUDENT ACTIVITIES

- **WEEKLY #STUDENTSPLIGHT** TO SHOWCASE AND CELEBRATE THE GREAT THINGS STUDENTS AND STUDENT GROUPS ACHIEVE
- **'SPEED-FRIENDING' EVENTS** FOR STUDENTS WHO LIVE AT HOME, STUDENTS WITH CARING RESPONSIBILITIES AND POSTGRADUATES
- A CLEAR, STRAIGHT-FORWARD **ONLINE ROOM BOOKINGS SYSTEM** TO PREVENT CLASHING STUDENT GROUP EVENTS
- **WE ARE TEAM LEICESTER:** GETTING THE CAMPUS BEHIND OUR FANTASTIC SPORTS TEAMS, THROUGH SPECIAL DEALS FOR THOSE ATTENDING MATCHES AND PROMOTING THE ACHIEVEMENTS OF OUR SMALLER TEAMS AS WELL AS OUR BIGGER ONES



A UNION THAT WORKS FOR EVERY SINGLE STUDENT

- **LEADERSHIP WORKSHOPS** FOR UNDER-REPRESENTED GROUPS OF STUDENTS, TO MAKE THE UNION REFLECT ITS DIVERSE MEMBERSHIP
- **WORK WITH LIBERATION OFFICERS** TO MAKE SURE OUR ACTIVITIES ARE ACCESSIBLE FOR ALL TYPES OF STUDENTS
- **AN ONLINE INTRODUCTION AND FRESHERS'** TO MAKE SURE THE UNION IS RELEVANT TO STUDENTS OFF-CAMPUS, ESPECIALLY DISTANCE LEARNERS
- **EVENTS FOR INTERNATIONAL STUDENTS ALL YEAR ROUND,** NOT JUST DURING INTERNATIONAL WELCOME WEEK
- **VEGAN OPTIONS IN CATERED HALLS** AND MORE OPTIONS FOR STUDENTS WITH DIETARY REQUIREMENTS ON CAMPUS

ABOUT ME

- SU PRESIDENT 2015-
- SU WOMEN'S OFFICER 2013-15
- PRESIDENT, FEMINIST SOCIETY 2013-14
- PRESIDENT, HOPE NOT HATE SOCIETY 2013-14
- TREASURER, ANCIENT HISTORY AND ARCHAEOLOGY SOCIETY 2013-15
- HEAD OF MUSIC, LUSH RADIO 2012-13
- UNION COUNCIL OFFICER 2012-13
- NUS WOMEN'S CONFERENCE DELEGATE 2013/14/15
- NUS DELEGATE 2015/16
- NUS NATIONAL EXECUTIVE COUNCIL 2015-
- ANCIENT HISTORY AND HISTORY COURSE REP 2012-13
- SU STUDENT STAFF MEMBER (STARBUCKS) 2013-15

TWEET: @RHOLL92 | EMAIL: RH291@LE.AC.UK |
FACEBOOK: /RACH4PRES | #REELECTRACHEL

LEICESTERUNION.COM/VOTE
22ND FEBRUARY - 26TH FEBRUARY

LEICESTER STUDENTS' union

Do you think none of the candidates
are good enough to be a President

Then vote for **Re-Open Nominations**
(R.O.N.)

If R.O.N. is elected then the election
will have to be re-run allowing other
students to bring forward their ideas

LEICESTER STUDENTS' union

Sports Officer





GRACE BRADY

GET TO KNOW ME:

- 3rd year Politics and Sociology Student
- Course rep
- Sports secretary for polair society
- University of Leicester Netball Club member
- Vice Captain of ULNC 3rds
- volunteer coach

VOTE #1
SPORTS OFFICER

EDUCATION VS SPORT; IT SHOULDN'T BE A CHOICE!

-Working collaboratively with the university and BUCS so that you don't have to miss ANY contact hours to make BUCS fixtures or miss fixtures to make your lectures

MORE MEMBERSHIP

OPTIONS

- catering for a wider variety of gym users
- increasing value for money

BALANCING FUNDING

- making funding of teams more balanced and increasing funds to those who need it
- providing extra support to committees within each club

INCREASED COVERAGE OF TEAM LEICESTER

-Highlighting the talent within team Leicester with a weekly round up of team performances

OFFERING MORE ALTERNATIVES TO BUCS

-working to make university initiative such as lets do Leicester and Intramural leagues more student driven, giving you what you want

-addressing barriers to participation within Team Leicester and sport for generally

WHERE TO FIND ME:

FACEBOOK: [https://
www.facebook.com/
brady4sports/](https://www.facebook.com/brady4sports/)

TWITTER: <https://twitter.com/>



VOTE TEAM RASTEEN

#1 FOR SPORTS

I believe that the benefits of sports and exercise are unparalleled and vital. I believe sports needs more support and the benefits that it brings should be available to **all**. That's **you**. Whoever **you** are, whatever **your** background is in sports or exercise. It is my aim to make exercise and sports at Leicester more **accessible, enjoyable** and **affordable** for **you**.

By making sports more accessible to all, I will improve the mental and physical wellbeing of the general student population at Leicester. This will filter down to **your** overall student experiences, your **academic** results and the reputation of the university as a whole.

My 3-point plan:

1. To improve support for sports teams
2. To raise awareness of the success and capabilities of sport teams
3. To improve accessibility to sports



Experience you say?

- Club Captain, Uni Leicester Lacrosse Club 2015/16
- Dep. Editor in Chief, The Ripple, 2015/16
- Club Colours 2015
- Treasurer, Uni Leicester Lacrosse Club 2014/15
- Deputy Sports Editor, The Ripple 2014/15
- Student Ambassador 2014-15
- LUSH Radio presenter 2014/15
- Nightline Publicity Officer 2015 and volunteer 2013/15
- Social sec, Uni Leicester Lacrosse Club 2013/14

Here is a little bit about me. In a hurry? That's cool, please read ahead to my **3-point plan!** I'm Rasteen, I'm a 3rd year History of Art student, but my real love is sport and I want to be your 2016/17 Sports Officer.

As it happens I've not always been a 'sporty' individual and I have discovered at first hand the incredible experience of joining a sports team at university. I used to worry every time I had to dribble a ball, run a lap or throw a shot put. I stayed well away from exercise for years. However once I'd enrolled at Leicester my father recommended I finally jump in at the deep end and join a team.

Joining the Uni of Leicester Lacrosse Club was the best decision I've made and I'm sure if you're in a team you'll relate. No other experience would have harboured such a strong sense of **leadership, teamwork or dedication** within me.

As Sports Officer I wish to ensure this a readily available and equally rewarding experience for as many of **you** as possible.



THE THREE POINT PLAN:

1

To Improve SUPPORT as your sports officer I will:

1. Introduce total 12pm Wednesday cut offs
2. Continue the fight to cap gym prices
3. Asslst teams in raising their profiles through charity fundraising e.g RAG Ralids
4. Introduce new grant fund pot to support teams who require specific equipment to train e.g. helmets

2

To Improve AWARENESS I will:

1. Publicise fixture results on new website, FB/Twitter and display footage online on SU screens
2. Increase autonomy and voice of clubs through a joint forum
3. Expand the Be The Influence campaign and reward teams for positive behaviour

3

To improve ACCESSIBILITY I will:

1. Distribute free gym passes
2. Widen participation with LGBTQ+ and BAME
3. Distribute info booklets for first years outlining all clubs'
 - Membership fees
 - Contact details
 - training times and locations
 - employment prospects for non-team members

I'm on your Team,
VOTE RASTEEN!



www.facebook.com/teamrasteen



@teamrasteen

Voting opens Mon 22nd Feb www.leicesterunion.com/vote

LEICESTER STUDENTS' union

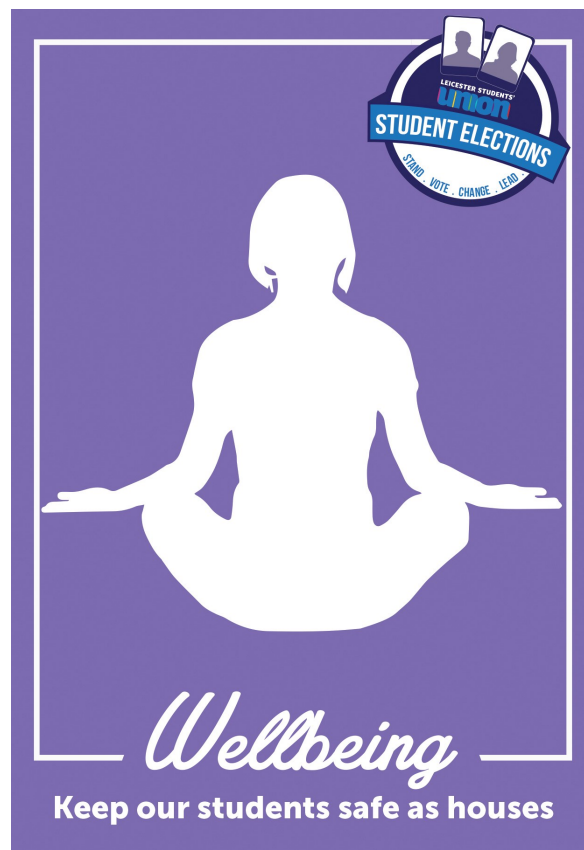
Do you think none of the candidates
are good enough to be a Sports
Officer

Then vote for **Re-Open Nominations**
(R.O.N.)

If R.O.N. is elected then the election
will have to be re-run allowing other
students to bring forward their ideas

LEICESTER STUDENTS' union

Wellbeing Officer



Vote **HARRIET** for
YOUR WELLBEING



As your Wellbeing Officer, I would introduce...

'Happy Food Hours' for promotional and short-dated stock – stop waste, save money, eat well!

'Compare The Housing Market.com': student experiences of landlords/ letting agencies/ houses (both good and bad!) to give you as much information as possible when renting student accommodation

Mitigating Circumstances Reform to find out from students what's working and what's not – whether this system could be improved to help protect your education and wellbeing

Mental Health First Aid training opportunities for staff and students to ensure signs of mental ill-health are spotted quickly and are responded to effectively

'Pay before you Party' Pack: your ticket + drinks vouchers + taxi vouchers – this will help you budget and make sure you get home safely from nights out

Vote **HARRIET** for
YOUR WELLBEING



As your Wellbeing Officer, I would introduce...

Online Campus Complaints Form for issues from noise in the library to reporting suspicious or offensive behaviour around campus – reporting the issue will help others be more vigilant and safe

Calming Hubs on Campus during the exam period: rooms dotted round campus with colouring, calming music, and space to break away from revision!

I will also...

Continue to Raise Awareness of student health and wellbeing through stalls, events and campaigns – focusing on the 5 steps to mental wellbeing

Insert Your Ideas Here I'm not going to pretend to have all the answers – but **I will listen to you** and work hard to ensure the welfare, safety and wellbeing of the students at the University of Leicester is protected and promoted

Who Am I?

- Current 3rd Year Applied Psychology Student
- Member of Leicester University Chorus
- Member of University of Leicester Running and Athletics Club
- Student Ambassador
- Wannabe 'Great British Bake Off' Contestant
- Black Belt in Karate (not a threat!)



My Experience...

- Current President of the Mental Health Awareness and Support (MHAS) Society
 - Raised £2300 for male suicide prevention charity
 - Provide volunteering opportunities for members
 - Run university-wide campaigns for awareness
 - Already established links with student support services
- Former Campus Publicity Officer for MHAS
 - Raised over £2000 for mental health charities
 - Helped in the setting up of the society
 - 'Best New Student Group of the Year' (Student Union Awards – June, 2015)
- Current group facilitator and Communications' Officer for the Student Minds Eating Disorder Support Group on campus
- Volunteer for 'Over the Wall' serious illness children's camp for the past 2 years





ABOUT ME!

Psychology with cognitive neuroscience with the aim of becoming a clinical psychologist. I have years of volunteering experience with vulnerable people. My dissertation is on **Stress, Exercise and how this effects cognition.**


Teaching as a **Pole Fitness and dance committee member** has been endlessly rewarding. **Confidence** can grow so fast ,all that is needed is **positivity and support!**

I have **worked in the union for nearly 3 years** and I have realised that I don't want to leave just yet!! There are many wonderful people who provide fantastic services here, that I feel I can work with to **promote and expand what we already have.**

VOTE TERESA FOR WELL- BEING



MENTAL WELL BEING

- * **Awareness of Services:** The University has multiple fantastic services already available on campus for your needs. I will strive to keep you update with events and campaigns from **Nightline, MHAS, Look after Your Mate, the Sexual Health clinic and Head Space** to name a few.
 - * **Library Bean Bags:** For when you just need half an hour away from revision to sit and unwind with a magazine or newspaper.
 - * **Mindfulness:** Introducing more students to the concept of mindfulness. I will get **free short courses** provided to successfully implement mindfulness into your everyday life.
- 



PHYSICAL WELLBEING

- * **Permanent Links with Leicester Market:** For a better selection of fruit and vegetables in the union at **reasonable prices.**
- * **Water Fountains:** drinking water should be made more readily available around the university campus to fuel busy brains!
- * **Protection on Victoria Park.** Park wardens, torches and rape alarms for crossing Victoria Park. I will work with council and local charities to **improve safety.**
- * **Improve the Night Bus:** Return trips to and from halls to the 02 via a randomised ticket stub system. Preventing fights and crushes in the queues and **keeping people safe.**



SOCIAL WELLBEING

- * **Fresher's Introductory Pack:** This will include all relevant university information, with additional information on services available in the union. To help make moving in to halls a more **welcoming** experience we'll provide a **complementary door hanger, door stop, tea bag and mini tooth brush and tooth paste.** Plus a year **calendar** with the relevant dates will make time management easier.
- * **Expanding the Role of Residential Advisors**
- * **Sober Activities on Campus:** Quizzes, movie nights, games and gigs well-advertised throughout the year not directly related to societies. Relax, unwind and socialise with new people.



I AM HERE FOR YOU!

- * **Choosing a Home:** I will develop a **rating system** to identify the best state agents for students, based on previous experiences to make transition from halls to houses **less stressful**.
- * **Better Recognition for Union Staff Members:** Wide-spread **discounts** for all members of union staff available in all outlets of the union. I will develop a **peer reward** system and implement **Time To Change** for a healthier workplace.
- * **Sign Posting:** The Percy Gee is a confusing place! Physical and online interactive **maps** to the union's fantastic facilities, making it more accessible to students.
- * **Drop-in Sessions With Me!** For any queries you may have, I will be **readily contactable**, even if it's for a coffee and chat.



Vote Becki #1 for Wellbeing



About Me

- + 3rd Year Contemporary History Student
- + Internal Coordinator of Nightline Leicester
- + Secretary of HOPE Not Hate



Experience:

- + **Current Internal Coordinator of Nightline Leicester** - Improving the service and enabling volunteers to support *your wellbeing*
- + **Former Chair of Nightline Leicester** - Ensuring the smooth running of *your student-run support service*
- + **Part of the Personal Tutor Working Group** - Reforming the personal tutor system to improve *your experience*
- + **Former Course Rep** - Representing *your views*
- + **Over 1000 volunteering hours completed** - Committed to *your welfare*

Vote

Mon 22nd - Fri 26th

www.leicesterunion.com/vote

@Becki4Wellbeing

www.facebook.com/Becki4Wellbeing

Support

Vote Becki



As your Wellbeing Officer I will improve: Your Safety

- + **Guaranteed Taxi Scheme on O2 nights - Can't pay now? You can use your student card as collateral tonight and pay tomorrow at the SU**
- + **Pursue better safety measures in Victoria Park - You should be able to walk home with confidence no matter the time of day**

Your Accommodation

- + **Greater support for students with rent disputes - Expanding legal services outside of term time to help you know and defend your rights**
- + **Further help for international and postgraduate students - A comprehensive guide so you do not have to worry about finding accommodation, either temporary or permanent**
- + **Useful utilities guidance and information - You deserve more help than the University currently offers**
- + **Specific information relating to your Halls of Residence - You should know where you are living**

Your Exams

- + **Review assessment weightings and deadlines - Exploring alternatives to exams and ways to prevent your deadline clashes**
- + **Campaign for free buses during exam weeks - Making transport one less thing for you to worry about**

Vote

Mon 22nd - Fri 26th

www.leicesterunion.com/vote

@Becki4Wellbeing

www.facebook.com/Becki4Wellbeing

Support

Vote Becki



As your Wellbeing Officer I will improve: Your Health

- + **Work with the Sports Executive to restructure gym membership - You should be able to structure your membership around you**
- + **Build better links between local GPs and University support services - Keeping your GP informed of developments in the support structure**

Your Support Services

- + **Increased use of Skype - Giving you access to more off-campus support**
- + **Better promotion of University support services - Offering you a Fresher's Services Fair and a greater presence in Halls**
- + **Collaboration with external support organisations - Creating a support network within your Union for those affected by sexual crimes**
- + **Further peer support - Providing peer support for postgraduates and empowering your peer support societies**
- + **Campaign to secure guaranteed funding for Nightline - Ensuring the continued success of your student-run support service**

Your Union

- + **Introduce an SU Loyalty Card - Helping you save money in the SU**
- + **Hold regular drop-ins with your SABBs - Increasing transparency and being your first point of contact**
- + **Establish peer support training for student group leaders - Enabling you to better support your friends**

Vote

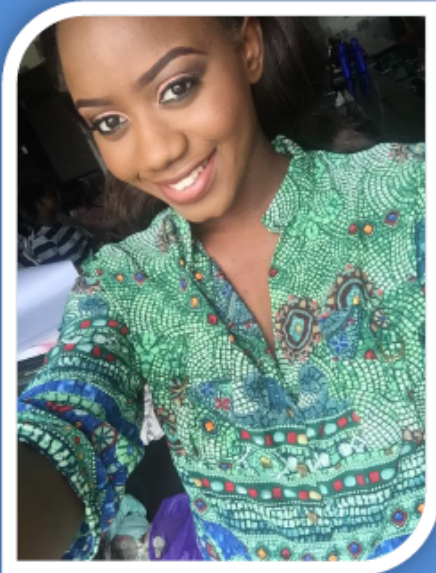
Mon 22nd - Fri 26th

www.leicesterunion.com/vote @Becki4Wellbeing

www.facebook.com/Becki4Wellbeing

Support

YOUR wellbeing + MY dedication = SUCCESS



Vote 
Morayo
Possible



My main aims

- More water fountains around the university.
- Shed more light on and ensure racial and gender issues and taken more seriously and treated according
- Sex aid- free sex test and treatment every term.
- Ensure the students have and are aware of the support available



More Water Fountains

- We only have one water fountain, and for a university with a population of about 23,000 people, this is evidently insufficient
- I have been a course rep in both my first and second years, wherein I tried to implement this, but it proved particularly difficult. Being welfare officer, I believe, will enable me execute this successfully
- We currently have some in the toilets of the library, which I find highly unhygienic, as water borne communicable diseases can be easily contracted.
- If I am elected your welfare officer, I will ensure more water fountains are made available and accessible, preferably in every building and on every floor.



Ensure the students have and are aware of the support available

- This is aimed mostly at first year students, as it is commonly their first time away from home. First years tend to be uncertain or unaware of the support that the university has in store for them.
- If I am elected the welfare officer, I will ensure that the

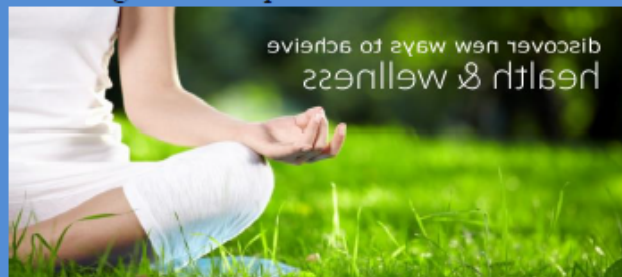


students are aware of these support systems. I will execute this through posters in the toilets and seminar rooms, as well as flyers being distributed during the fresher's fair, highlighting where they can go and who to contact when in need of support. This will enable increased awareness regarding the opportunities present in the university to provide support.



Sex aid

- As growing adults, we are at a point in our lives wherein our hormones may get the better of our actions.
- I, therefore, believe it is imperative that sex education is provided at least once a year to inform us about the implications and consequences of these actions, so as to enable us take responsibility accordingly.
- If I am elected the welfare officer, I will strive to ensure provisions are made for protective measures such as contraception, as well as curative measures to enable probable patients are checked.
- This will not only protect potential victims, but also encourage safe sex practices.



YOUR UNION, YOUR SAY, GET VOTING!



1

VOTE Astra McKenzie #1 for wellbeing

About Astra:

Active member of the nightlife publicity team

3rd year Politics and Sociology BA student

Involved in community volunteering

Background in peer and sexual health mentoring

Confused about housing?

- **I will introduce an online interactive accommodation forum** to compare all available properties, letting agents, and landlords.
- **I will introduce a housing fair** where students can speak to letting agents



My mentees and I raising money for the mental health charity MIND last summer

Did someone say sexual health?

- **I will introduce a sexual health awareness week** that would cover everything from STDs to fitting condoms, especially targeted toward first year students. This will include rape organizations and charities who can offer support and information for men and women
- **I will introduce an online, interactive and anonymous forum** where survivors of sexual assault and rape can speak confidentially and anonymously to those who've been in the same situation, and where they can contact health care professionals and rape charities.
- **I will introduce a LGBT awareness fair where** LGBT charities and special guest speakers will be able to share their experiences

YOUR UNION, YOUR SAY, GET VOTING!

You're not alone!

- **I will introduce student led group sessions for sufferers of self-harm and one to one support for other mental health issues.**
- **I will aim to remove the stigma attached to the BAME community and mental illness** it is important to cater mental health care to the individual. Black women are at a high risk of developing mental health issues but they are rarely highlighted. I open up discussion about mental illness within Black and ethnic minority communities.
- **I will improve university's support for international students applying a post-study work visa,** through offering financial aid or administrative support
- **I will introduce a Disability Awareness Fair offering** information about different types of disabilities and inform students about the different facilities available to students affected including learning and financial support.

Staying safe when you're out and about

- **I will launch a Anti-spiking drinks campaign** and introduce anti-spiking bottle caps on union nights out
- **I will introduce free self-defense training courses for women.**

Looking and feeling fab

- **I will introduce extended opening hours for the Danielle Brown sports center on campus and the Roger Bettles sports center located in Oadby village.**

LEICESTER STUDENTS' union

Do you think none of the candidates
are good enough to be a Wellbeing
Officer

Then vote for **Re-Open Nominations**
(R.O.N.)

If R.O.N. is elected then the election
will have to be re-run allowing other
students to bring forward their ideas

LEICESTER STUDENTS'
union

Voting: 8am Monday 22nd

until

2pm Friday 26th February

@

www.leicesterunion.com/vote